

## In This Issue

Page 2... ..Rhoades Garden

Page 2... ..New Members

Page 3... ..Spring Donations

Page 4... ..Annual Membership

... ..Meeting

### MISSION STATEMENT

Friends of Baker Park, Inc., is a non-profit, volunteer-staffed community service organization dedicated to fostering community involvement with the Frederick City Government in the preservation, restoration, use and maintenance of Baker Park.

### 2011 BOARD OF DIRECTORS

Kathy Fay, President

Peter Brehm, Secretary/

President-Elect

Charlotte Meierhoefer, Treasurer

Nancy Cline, Director

Robin Cook, Director

Emily Dorr, Director

Betsy Fisher, Director

Denise Gouin, Director

Jennifer Grove, Director

Dawn Irwin, Director

Patty Kettlestrings, Director

Richard Lind, Director

Aubrie Nagy, Director

Chris Judd, Friends of

Waterford Park Liaison

Friends of Baker Park

P.O. Box 4146

Frederick, Maryland 21705-4146

Contact: Kathy Fay, President

friendsofbakerpark@gmail.com



## Friends of Baker Park Partners with Leaders on Loan

Leadership Frederick County has developed Leaders on Loan to serve the needs for three to five non-profit organizations over a nine-month term. Members of Leadership Frederick County match the talents of its future class leaders with the needs of those non-profit organizations who have submitted applications and been selected for the program.

As part of its planning and preparation for the Culler Lake Renaissance project, in the fall of 2011 the Friends of Baker Park Board successfully submitted a proposal to Leaders on Loan for assistance in creating a Marketing and Capital Campaign for the Culler Lake Renaissance project initiated earlier that year. Leaders on Loan team members assisting Friends of Baker Park include:

Mary Barry, Frederick County Bank

Blair Hughes, Frederick Memorial Hospital

Christopher Massi, FCC Foundation

Kent McClintock, M&T Bank

Mary Ellen Mitchell,

Leaders on Loan Liaison

Joan Porter

Matt Trendell, Morgan-Keller

Under the leadership of Kent McClintock, the team drafted two iterations of a plan for review by Friends of Baker Park and joined the Board to discuss this document and the Culler Lake Renaissance in early 2012. A final report was supplied to the Friends of Baker Park earlier in April.

Friends of Baker Park President, Kathy Fay noted, "We've been delighted with the enthusiasm and knowledge that the Leaders on Loan team has brought to this effort," adding, "We've already gained helpful insights from them that were either new to us or validated the direction we were headed, and we've started to pursue these." Some of these include:

- An effort of this magnitude will require its own bank account and staff who can be available to answer phones, send letters, etc.
- Fund raising expertise will be needed to supplement Friends of Baker Park Board efforts.
- In addition to individual, corporate, and foundation donors, local, state, and even federal project dollars might offer funding possibilities.
- Communications about the effort should be pursued through newspapers, magazines, social media and the internet, as well as through speaking engagements to Neighborhood Advisory Commissions (NACs), civic and social groups, and other organizations.

The Board will review the document and approve actions to implement the recommendations.

## MEMBERSHIP AND GIVING NOTES

### WELCOME NEW MEMBERS!

Our Fall Membership Drive was a huge success! We welcome many new members, extend a thank you to those members who upgraded to Life status, and welcome back some former members who rejoined our organization. We would also like to thank our existing members for their continued support of FOBP each year. If you need to update your contact information or have any membership questions, please feel free to contact Patty Kettlestrings at [jpkstrings@comcast.net](mailto:jpkstrings@comcast.net).

### NEW INDIVIDUAL, FAMILY OR BUSINESS MEMBERS

Jackie & Robert Bastide  
Nancy Bittle  
Susan Chapman  
Stacy Reno  
Edgar E. Crutchley  
Robert Eversz & Family  
Karen & Steve Kallmyer  
Bob & Judith Lauer  
Anne & Jerry McKelvey  
Mark & Ellen Pryzbocki  
John & Deborah Rooney  
Robert & Celeste Sanchez  
The Sonnenstrahl Family  
Edward & Robin Thompson  
Beverly K. Wharton  
Bob Whiting  
Joe & Elke Dorr  
Jack Bickley & Leslie Geiger  
Susan Morgan-Chandler  
Blake & Molly Pelzer  
Joy Perkal  
Mike & Pam Ritmiller

### NEW LIFE MEMBERS

Robin & Terry Cook  
Bernard & Denise Gouin  
Patti & Tal Hart  
Irene & Nick Kirilloff  
Linda Moran

### GENERAL FUND DONATIONS

We thank all members who give donations to the Friends of Baker Park above and beyond the annual dues or Lifetime Membership... your generosity is greatly appreciated.

Dorrine Armstrong  
John & Deborah Rooney  
Nancy Sandler

## Culler Lake Renaissance Moves Forward!

You may have read in the Frederick News-Post about the Friends of Baker Park's latest efforts toward realizing our vision of a revitalized Culler Lake. In February we presented the plan to both the Parks and Recreation Commission and Frederick's Mayor and Board of Aldermen. We were thrilled to receive enthusiastic responses from both groups. We have been speaking to community organizations at their invitation to introduce the lake concept and to answer specific questions and concerns.

**If you are a member of a community group that would like to schedule a presentation, please contact Kathy Fay at 301-694-9686 to set up a date. Our talk takes about 20 minutes with additional time for questions and answers.**

A rendering of the plan is included in this newsletter but we invite you to attend our May 14th General Membership Meeting when our designer will be on hand to review the plan and answer any questions you may have. This meeting is a follow-up to the one held in May 2011 when we invited members and neighbors to let us know what they wanted to see incorporated into the renovated lake design. Your input was an essential component of the final plan and we would like to show you the result!

**Friend of Baker Park Annual General Membership Meeting  
Monday, May 14th, 7:00pm • Second floor of the Talley Recreation Center  
Agenda: Presentation of Master Plan for Culler Lake**

We think you will be pleased to see that we tackled most of your primary concerns and wishes. The plan addresses your stated goals of improving water quality, providing year-round recreational opportunities (especially ice skating!), deterring the geese population, making the west end of the lake more inviting, and preserving historical resources and natural habitats.

We are moving forward but have a long way to go! You will read in this newsletter about our partnership with Leadership Frederick. We are very pleased to have their guidance in formulating next steps. We are also fortunate in our relationship with the Community Foundation of Frederick County which will offer us their expertise and practical help as we move ahead.

We hope to see you on May 14th and invite you to join us in our efforts to preserve and enhance Baker Park, a great asset to our quality of life in Frederick!

## Membership

**Gift of Membership:** Do your friends or loved ones appreciate non-traditional gifts? This spring consider giving a gift of membership to a special mom, dad, or graduate – a unique gift that lasts all year!

Please contact Patty Kettlestrings at [jpkstrings@comcast.net](mailto:jpkstrings@comcast.net).

## Membership Form

☐ Yes, I wish to become a member of the Friends of Baker Park. I have enclosed payment for the membership category indicated below.

Name: \_\_\_\_\_ Email: \_\_\_\_\_

Address: \_\_\_\_\_ Telephone: \_\_\_\_\_

City: \_\_\_\_\_ State: \_\_\_\_\_ Zip: \_\_\_\_\_

Membership Status: ☐ New ☐ Renewal Date: \_\_\_\_\_

Membership Type: ☐ Individual \$10 ☐ Family \$25 ☐ Business \$50 ☐ Lifetime \$350

Consider giving toward our general fund to help Friends of Baker Park \$ \_\_\_\_\_

Please complete, detach and mail to FOBP, PO Box 4146, Frederick, MD 21701  
Be sure to give us your email address - we promise it will go no further!

# Donation Opportunities for Baker Park

This is a meaningful way to honor loved ones and contribute to help Baker Park remain beautiful and accessible to Frederick residents and visitors.

**Benches** 6ft-\$2500 or 8ft-\$3000 including plaque

Contact Nancy Cline 301-662 8076

**Trees** \$200-400

Contact Denise Gouin 301-694-3149

**Picnic Pavilions** \$4125 including plaque

Contact Denise Gouin 301-694-3149

## General Donation Fund

Checks payable to Friends of Baker Park, Box 4146, Frederick, MD 21705

## GIFT PLANNING & MAJOR GIFTS

If you or a loved one is interested in planning a major gift to Friends of Baker Park please contact our President, Kathy Fay. Gift planning is a great way to defer your gift and offers potential savings on income and estate taxes. It can be as simple as designating Friends of Baker Park in a will or trust.

## Spring Donations

### BENCHES

In honor of Ruby Scherer:

Donated by The Edwin Cornish Family

Donated by 2011 Candlelight House Tour

### TRASH RECEPTACLE

Donated by JJ and Candy Greenway

### TREES

Magnolia - In honor of Ruby Scherer

*There are many sites still available for new benches. Donating, or honoring someone special, with a long lasting bench is a wonderful way to help beautify Baker Park!*

New Bench &  
Tree Locations  
Available!



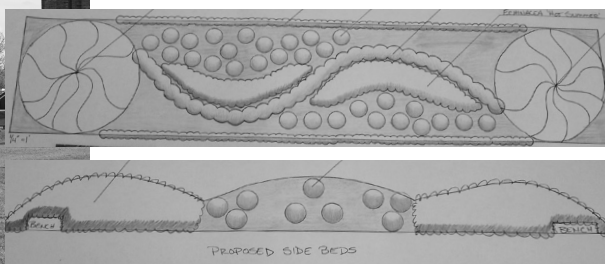
A new tree was donated to beautify Baker Park last fall. In honor of Kathryn Miller's 80th birthday, her family donated a sycamore tree that was planted close to the covered bridge. Born and raised in Frederick, Mrs. Miller spent hours of her childhood playing in the park around the covered bridge. As an adult, she went on to paint a winter scene of the same bridge.

Pictured next to the tree is Mrs. Kathryn Miller. The gift was made possible through the generosity of her son Rollie Atkinson and wife Sarah from California, daughter Sally and her husband Louie McMurry from Mt. Peasant, daughter Vicki Knill from Hagerstown, and son Marty and wife Hope Miller from Wolfsville.

We thank all the donors for adding to the beautification of our park. The trees that are chosen are always indigenous to our area to guarantee successful growth. For further information, please contact Denise Gouin at 301-694-3149 or [denisegouin@comcast.net](mailto:denisegouin@comcast.net).



## Rhoades Garden Rehabilitation



The Rhoades Garden is being rehabilitated this year. Located between the Culler Fountain on Bentz Street in Room 1 and the carillon, the health of the existing plants in these beds has been severely affected by crown gall, a bacterial disease that prevents nutrients from the soil to be absorbed into the plants. This bacteria can survive years after the plants have been removed. You will see graceful new bed designs and plants early this summer thanks to a generous donation from the Candlelight House Tour and the labor of City of Frederick Parks Division employee and City Horticulturist Meagan Fleming, who not only created a new plan for the beds but also is purchasing and installing the new plants. The new bed designs offer several spots for donated cherry trees; contact Denise Gouin at 301-694-3149 if you want to donate one.





P.O. Box 4146  
Frederick, MD 21705-4146

# SEE THE PLANS FOR CULLER LAKE

Annual Membership Meeting • May 14, 2012 • 7:00 p.m.

Talley Recreation Center (Old Armory), 3rd Floor Meeting Room

Join the Board of Directors for our Annual Membership Meeting. We will review the Culler Lake Master Plan and hear a detailed presentation from Marc DeOcampo, the designer hired to conceptualize the plan.

